

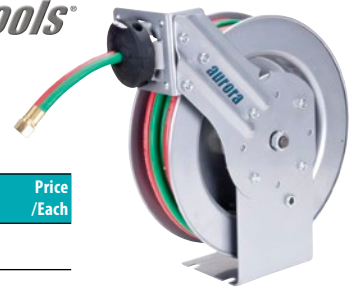
# HOSE REELS & ACCESSORIES



## WELDING HOSE REELS

- Heavy-duty, reinforced steel stampings for increased strength
- 1/4" oxygen and acetylene twin hose
- Leakproof double O-ring seals
- Compact design allows reels to fit in tight locations
- Multi-position guide arms for multiple mounting options
- Kinkless, oil resistant high quality hose
- Spring rewind features long life spring with declutching arbor
- Grade R hose
- Durable, corrosion-resistant powder coat paint

**aurora tools**



Model No.	Drive Type	Hose I.D."	Hose Length'	Max PSI	Oxygen Inlet & Outlet	Acetylene Inlet & Outlet	Dimensions			Wt lbs.	Price /Each		
							W"	x	D"			x	H"
TLZ487	Spring	1/4	25	300	9/16" x 18 UNF (Female)	9/16" x 18 UNF (Female)	8	x	14 3/4	x	13 5/8	25.9	
TLZ488	Spring	1/4	50	300	9/16" x 18 UNF (Female)	9/16" x 18 UNF (Female)	8 5/8	x	20 1/2	x	20 1/2	42.2	

## HOSE REELS

- Heavy-duty, reinforced steel stampings for increased strength
- For use with air and water
- Compact design allows reels to fit in tight locations
- Multi-position guide arms for multiple mounting options
- Kinkless, oil resistant high quality hose
- Spring rewind features long life spring with declutching arbor
- Durable, corrosion-resistant powder coat paint
- Good for air and water

**aurora tools**



Model No.	Drive Type	Hose I.D."	Hose Length'	Max PSI	Hose Outlet (M) NPT"	Reel Inlet (F) NPT"	Dimensions			Wt lbs.	Price /Each		
							W"	x	D"			x	H"
TLZ482	Spring	1/4	35	300	1/4	3/8	6	x	15 1/2	x	14	26.6	
TLZ483	Spring	3/8	25	300	1/4	3/8	6	x	15 1/8	x	13 7/8	26.2	
TLZ484	Spring	3/8	35	300	1/4	3/8	6 5/8	x	17 1/2	x	16 1/2	34.7	
TLZ485	Spring	3/8	50	300	1/4	3/8	6 1/2	x	20	x	18 3/8	40.3	
TLZ486	Spring	1/2	50	300	1/2	1/2	6 5/8	x	20 1/4	x	17 7/8	44.3	

## ARC WELDING REELS

### POWER OR MANUAL REWIND TO HANDLE #2 THROUGH 4/0 CABLE TO 400 AMPS

- 400-amp rated rotary electrical device
- Instant use with any cable length unwound
- For use with single conductor electrode cable or grounding lead
- Quick connection to your welder
- 4-way roller assembly
- Roller position must be specified

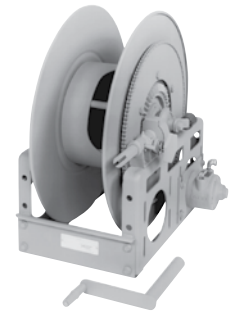
### SWCR SERIES

- Non sparking ratchet assembly
- Declutching arbor is provided to prevent damage from reverse winding
- A cable stop should be used



### WCR SERIES

- Gear driven crank rewind, chain and sprocket powered by an electric, hydraulic or compressed air motor
- Auxiliary rewind and pinion brake standard



**Hannay Reels**  
The reel leader.

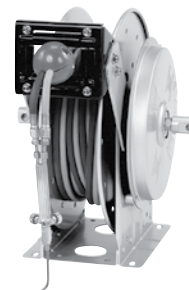
Model No.	Mfg. No.	Cable Capacity of Reel <sup>1</sup>							Approx. Weight		Standard Roller Assembly	Price /Each
		Gauge of Cable O.D."	#2	#1	1/0	2/0	3/0	4/0	Net lbs.	Ship lbs.		
<b>SWCR</b>												
886-1130	SWCR716-23-24-15.5G		85	85	60	60	60	40	85	120	R204	
TTT563	SWCR716-25-26-15.5B		-	-	-	-	60	50	91	126	R204	
TTT564	SWCR716-25-26-15.5A		-	-	100	-	-	-	106	141	R205	
<b>WCR</b>												
886-1921	WCR16-19-21		-	275	200	200	150	150	71	106	-	
TTT565	WCR16-23-24		-	-	-	-	300	200	78	113	-	

## GAS WELDING REELS

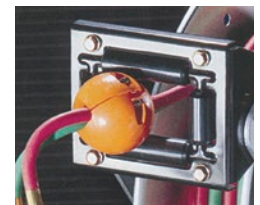
### SPRING REWIND TO HANDLE TWIN 1/4" THROUGH 3/8" WELDING HOSE

- Heavy-duty spring motor
- Non sparking ratchet assembly
- Declutching arbor to prevent damage from reverse winding
- Standard inlets 90° ball bearing swivel joints 1/2" female NPT threads
- Standard outlets male 9/16"-18 threads right hand for oxygen, left hand for gas
- Pressures to 300 PSI (21 bar)
- Temperatures from -40°F to 200°F (-40°C to 93°C)
- Type of gas used MUST be specified
- 4-way roller assembly (roller position must be specified)
- Hose stop is required
- Hose sold separately

**Hannay Reels**  
The reel leader.



Shown with optional hose and hose stop in the optional "TR" position



Model No.	Mfg. No.	Hose Capacity of Reel <sup>1</sup>			Approx. Wt.		Standard Roller Assembly	Price /Each
		I.D." O.D."	1/4	3/8	Net lbs.	Ship lbs.		
TTV150	N416-17-18-8L	2/50	-	-	64	71	N204	
TTV151	N416-19-20-8L	-	2/50	-	68	75	N204	
TTT568	N416-19-20-10.5C	2/25	2/25	-	70	77	N204	
886-1060	N416-19-20-8J	2/50	2/50	-	74	83	N204	
TTT569	N416-23-24-10.5G	2/75	2/75	-	94	112	N204	
886-1080	N417-23-24-10.5G	2/100	2/100	-	95	115	N205	

Model No.	Mfg. No.	Description	Price /Each
886-1030	HS-3	Hose Stop	