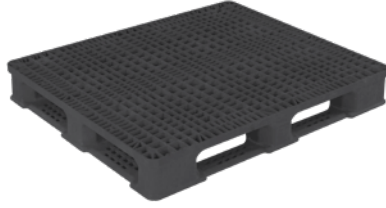


RACKOCELL PLASTIC PALLETS

- Designed to store products in wide variety of unsupported racking systems and optimize valuable floor space in warehouses and distribution systems
- Features flow-through deck for thorough sanitizing and fast drying capabilities
- Plastic pallet offers an economic, environmental and efficient alternative to wood pallets or skids
- Optional fork tine grommets (8) and outer post grommets (4) available upon request
- Pallet Entry: 4-Way
- Colour: Black



ORBIS

Model No.	Dimensions			Capacity lbs.		Price /Each
	L"	x W"	x H"	Static	Dynamic	
CG004	48	x 40	x 6.3	30 000	5000	

STACK'R MD PALLETS

- Open Deck With Stringer
- Designed specifically for stacking and racking applications
- Made of 100% HDPE
- The smooth, non-porous construction protects product and does not absorb moisture or odor
- Pallet Entry: 4-Way
- ISPM 15 exempt

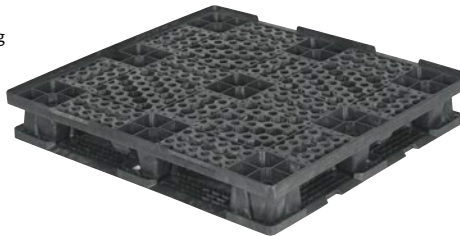


ORBIS

Model No.	Dimensions			Capacity lbs.		Wt. lbs.	Price /Each
	L"	x W"	x H"	Static	Dynamic		
MN726	48	x 40	x 5.9	30 000	4000	44.4	

DOUBLE DECK STACKABLE PALLETS

- Designed for handling and shipping heavy products
- Manufactured in HDPE structural foam
- An economic, environmental and efficient alternative to wood pallets or skids
- Double deck design, ideal for stack loading, conveying systems, distribution and static storage
- 4-way entry for fork and hand trucks
- ISPM 15 exempt



ORBIS

Model No.	Dimensions			Capacity lbs.		Wt. lbs.	Price /Each
	L"	x W"	x H"	Static	Dynamic		
MN168	48.7	x 45.7	x 7.5	30 000	4000	62	

MEDIUM-DUTY FOOD GRADE PALLETS

- Typically used in the food industry
- 1-piece construction with an open grid for easy cleaning
- Made of FDA compliant HDPE virgin material for direct food contact
- Edge-supported pallet on a rack can hold up to a 1000-lb evenly distributed load
- 4-way fork lift or pallet truck entry
- ISPM 15 exempt

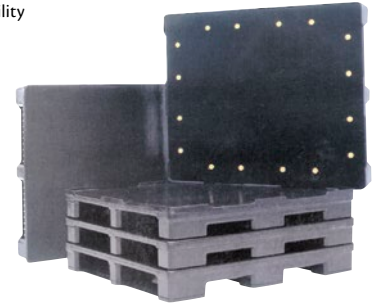
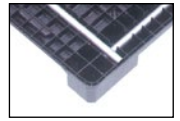


Model No.	Dimensions			Capacity lbs.		Wt. lbs.	Price /Each
	L"	x W"	x H"	Static	Dynamic		
MN490	48	x 40	x 6-1/10	25 000	5000	35	

RACKSTAR II™ PALLET

- Highly impact resistant design
- Internal reinforcements meet aggressive application requirements
- 100% recyclable with fully removable reinforcement structure
- Solid wall design for increased durability
- 4-way forklift accessible
- Easy to sanitize
- Removable/repairable stringers or full frame bottom, with easy-to-replace fasteners, are available for added capacity in forklift and conveyor use
- Rackable
- ISPM 15 exempt

Rackstar II™ Pallet



ORBIS

Model No.	Dimensions L" x W" x H"	Description	Capacity lbs.		Capacity lbs.		Wt. lbs.	Price /Each
			Static	Dynamic	Decking	Centre Supports		
CC163	48 x 40 x 6	Without lip (includes 16 deck grommets)	30 000	6000	6000	6000	3000	56.6

EXTRA-LONG STACKABLE PALLETS

- Pallet is fully reversible for double stacking of loads
- Manufactured in HDPE structural foam
- Designed for handling and shipping heavy product loads
- Ideal for stack loading, conveying systems, distribution and static storage
- 4-way entry for fork trucks
- ISPM 15 exempt



ORBIS

Model No.	Dimensions			Capacity lbs.		Wt. lbs.	Price /Each
	L"	x W"	x H"	Static	Dynamic		
MN170	72	x 48	x 5.8	30 000	4000	110	

MEDIUM-DUTY RACKABLE PLASTIC PALLETS

- Unique rib design for easy cleaning and sanitary applications
- Edge-supported racking application, maximum capacity of 1400 lbs.
- Bottom design of pallet ideal for automated conveying
- Anti-skid grommets on both top and bottom
- High pressure injection molded plastic pallets made with recyclable materials
- Grey
- ISPM 15 exempt



MONOFLO
INTERNATIONAL, INC.

Model No.	Dimensions			Capacity lbs.		Wt. lbs.	Price /Each
	L"	x W"	x H"	Static	Dynamic		
MN172	48	x 40	x 6	30 000	3000	42	

STACK'R LD PALLETS

- Open deck with stringer
- Designed specifically for stacking applications
- Made of 100% recycled content
- Lower per-trip cost than alternative pallets
- Versatile handling with 4-way hand and fork truck entry
- Lighter weight for better ergonomics
- ISPM 15 exempt



ORBIS

Model No.	Dimensions			Capacity lbs.		Wt. lbs.	Price /Each
	L"	x W"	x H"	Static	Dynamic		
MN714	48	x 40	x 5.9	30 000	4000	44.4	