

ERGONOMIC MATTING

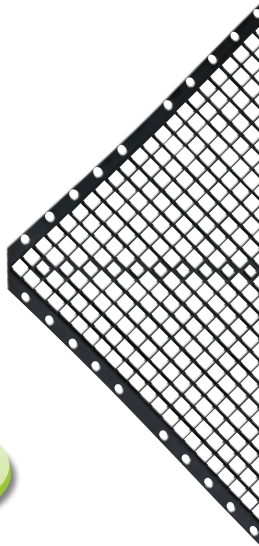
TRAXION GRIP NO. TIL1

- Modular interlocking 12" x 12" tile mat
- Wraparound edging prevents tripping
- 529 holes per tile assures excellent drainage of fluids
- Raised grippers on tiles guard against slippage
- 1/2" PVC is resistant to chemicals, oils, grease and animal fat
- Resistant to mould and mildew
- Fire resistant
- Colour: Black

Applications:

Wet or dry work areas.

Modular design allows you to size the mat to your exact specifications!



Model No.	Description	Price /Each
NB726	Tiles	
NB734	Wraparound edges	

ELEVATE SPORT NO. 372 DRAINAGE MAT

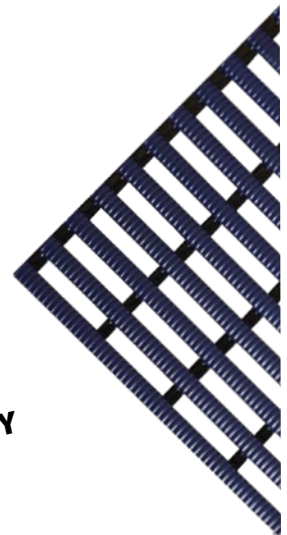
ANTI-FATIGUE MATTING

- Ultimate sports and leisure matting for wet, barefoot traffic
- Lightly embossed surface that delivers both comfort and slip prevention underfoot
- Below the surface, channeled underbars provide fast, multi-directional drainage
- Constructed of UV resistant, anti-fungal and anti-microbial PVC
- Type: Anti-Fatigue
- Thickness: 3/8"
- Material: PVC
- Surface Type: Slotted
- Environment: Wet

1-YEAR WARRANTY



WEARWELL™



Model No.	Colour	Dim.			Price /Each
		W'	x	L'	
JH565	Blue	2	x	3	
JH568	Blue	3	x	5	
JH597	Charcoal	2	x	3	
JH600	Charcoal	3	x	5	

ADD-A-LEVEL® WORK PLATFORMS

- Stackable platform is adjustable to any height for worker comfort
- Modular design permits hundreds of floor plans with interchangeable parts that snap together
- Can be assembled to desired height, length, or width with stacker and Poly-Clip system
- Made from strong, durable, high-impact plastic which resists oils, gas, acids and most chemicals
- No tools required
- Flow-through grid design permits scrap and liquids to fall through or drain below
- Base unit includes 4 rubber feet
- Join the base to one or more add-on units to raise the height
- Each unit is 2 5/8" and includes 4 stackers to connect platforms together vertically
- For horizontal connection use poly clips
- For worker comfort and to prevent worker fatigue place a platform mat on the top platform
- Choose a 1/2" grease-resistant mat or a 7/8" comfort drainage mat, both available in black or black with yellow borders for added visibility
- Plug-Lock system locks mats to platforms
- Ideal to outfit entire machine areas and departments



PLATFORM MATS

Model No.	Dim.			Price /Each
	W'	x	L'	
7/8" COMFORT DRAINAGE MAT - BLACK				
NG201	2	x	3	
NG202	2	x	5.5	
NG203	2	x	8	
BLACK W/YELLOW BORDERS				
NG205	2	x	3	
NG206	2	x	5.5	
NG207	2	x	8	

ACCESSORIES

Model No.	Description	Dim.			Price /Each
		W'	x	L'	
NG209	Poly-Clip Connectors (4/pkg.)	-			

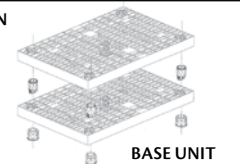
PLATFORMS

NG185	Base Unit	2	x	3	
NG186	Add-on Unit	2	x	3	
NG187	Base Unit	2	x	5.5	
NG188	Add-on Unit	2	x	5.5	
NG189	Base Unit	2	x	8	
NG190	Add-on Unit	2	x	8	

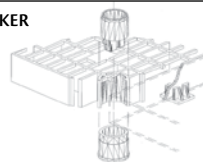
PLUGS LOCK MATS TO PLATFORMS



ADD-ON UNIT



STACKER



ADD-A-MAT

